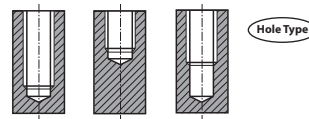
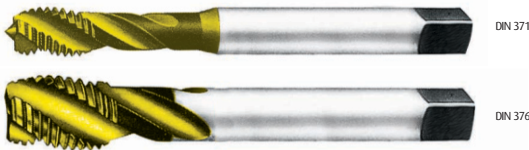




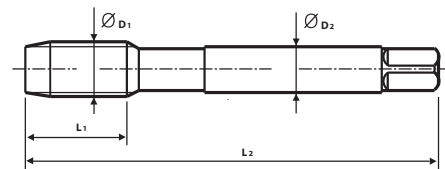
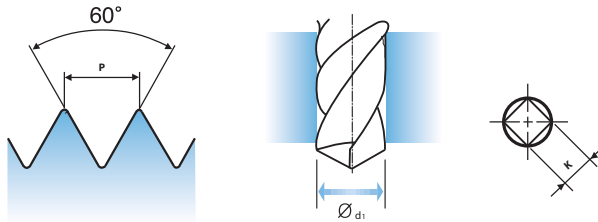
Taps



SPF51 Series ISO metric coarse threads DIN13



- Suitable for tapping blind holes due to special flute geometry and excellent chip evacuation.



Unit:mm

Size	Part No.	Thread Length L1	Overall Length L2	Shank Diameter ØD2	Square Size K	Tapping Drill Diameter Ød1
M2 X 0.4	SPF51136	8	45	2.8	2.1	1.6
M2.2 X 0.45	SPF51156	8	45	2.8	2.1	1.75
M2.3 X 0.4	SPF51196	8	45	2.8	2.1	1.9
M2.5 X 0.45	SPF51176	9	50	2.8	2.1	2.05
M2.6 X 0.45	SPF51496	9	50	2.8	2.1	2.1
M3 X 0.5	SPF51206	6	56	3.5	2.7	2.5
M3.5 X 0.6	SPF51226	7	56	4	3	2.9
M4 X 0.7	SPF51246	7	63	4.5	3.4	3.3
M4.5 X 0.75	SPF51266	8	70	6	4.9	3.7
M5 X 0.8	SPF51286	8	70	6	4.9	4.2
M6 X 1	SPF51316	10	80	6	4.9	5
M7 X 1	SPF51346	10	80	7	5.5	6
M8 X 1.25	SPF51366	13	90	8	6.2	6.8
M9 X 1.25	SPF51396	13	90	9	7	7.8
M10 X 1.5	SPF51426	15	100	10	8	8.5
M11 X 1.5	SPF51466	17	100	8	6.2	9.5
M12 X 1.75	SPF51506	18	110	9	7	10.2
M14 X 2	SPF51546	20	110	11	9	12
M16 X 2	SPF51606	20	110	12	9	14
M18 X 2.5	SPF51656	25	125	14	11	15.5
M20 X 2.5	SPF51706	25	140	16	12	17.5
M22 X 2.5	SPF51746	25	140	18	14.5	19.5
M24 X 3	SPF51786	30	160	18	14.5	21
M27 X 3	SPF51866	30	160	20	16	24
M30 X 3.5	SPF51946	35	180	22	18	26.5

- DIN 371 (M2~M10) and DIN 376 (M11~M30)
- DIN profile not ISO

Unit : N/mm²

● : Excellent
○ : Good

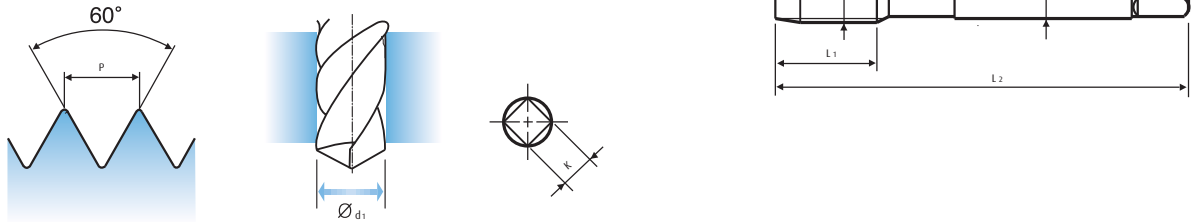
Steel < 400	Steel < 700	Steel < 850	Steel Alloy < 850	Steel Alloy < 1200	Steel Alloy > 1200	INOX Free < 850	INOX Aust. < 850	INOX < 1000	GG Cast < 500	GG Cast < 1000	GGG Cast < 700	GGG Cast < 1000	Ti < 700	Ti Alloy < 900
	●	●	●								●	●	○	
Ti Alloy < 1300	Ni < 500	Ni Alloy < 900	Ni Alloy < 1400	Cu < 350	Cu Alloy Short	Cu Alloy Long	Cu-Al-Fe < 1500	Al / Mg < 350	Al Wrought	Al Si<10%	Al Si>10%	Plastic Thermosoft	Plastic Thermoset	Plastic FRP
	○			○		●		○	○	○	●	○		



SPF52 Series
ISO metric coarse threads DIN13



- With recessed threads for machine tapping of deep blind holes.
- Suitable for tapping blind holes due to special flute geometry and excellent chip evacuation.



Unit:mm

Size	Part No.	Thread Length L1	Overall Length L2	Shank Diameter ØD2	Square Size K	Tapping Drill Diameter Ød1
M2 X 0.4	SPF52136	8	45	2.8	2.1	1.6
M2.2 X 0.45	SPF52156	8	45	2.8	2.1	1.75
M2.3 X 0.4	SPF52196	8	45	2.8	2.1	1.9
M2.5 X 0.45	SPF52176	9	50	2.8	2.1	2.05
M2.6 X 0.45	SPF52496	9	50	2.8	2.1	2.1
M3 X 0.5	SPF52206	6	56	3.5	2.7	2.5
M3.5 X 0.6	SPF52226	7	56	4	3	2.9
M4 X 0.7	SPF52246	7	63	4.5	3.4	3.3
M4.5 X 0.75	SPF52266	8	70	6	4.9	3.7
M5 X 0.8	SPF52286	8	70	6	4.9	4.2
M6 X 1	SPF52316	10	80	6	4.9	5
M7 X 1	SPF52346	10	80	7	5.5	6
M8 X 1.25	SPF52366	13	90	8	6.2	6.8
M9 X 1.25	SPF52396	13	90	9	7	7.8
M10 X 1.5	SPF52426	15	100	10	8	8.5
M11 X 1.5	SPF52466	17	100	8	6.2	9.5
M12 X 1.75	SPF52506	18	110	9	7	10.2
M14 X 2	SPF52546	20	110	11	9	12
M16 X 2	SPF52606	20	110	12	9	14
M18 X 2.5	SPF52656	25	125	14	11	15.5
M20 X 2.5	SPF52706	25	140	16	12	17.5
M22 X 2.5	SPF52746	25	140	18	14.5	19.5
M24 X 3	SPF52786	30	160	18	14.5	21
M27 X 3	SPF52866	30	160	20	16	24
M30 X 3.5	SPF52946	35	180	22	18	26.5

- DIN 371 (M2~M10) and DIN 376 (M11~M30)
- DIN profile not ISO

Unit : N/mm²

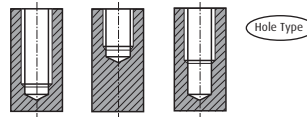
● : Excellent
○ : Good

Steel < 400	Steel < 700	Steel < 850	Steel Alloy < 850	Steel Alloy < 1200	Steel Alloy > 1200	INOX Free < 850	INOX Aust. < 850	INOX < 1000	GG Cast < 500	GG Cast < 1000	GGG Cast < 700	GGG Cast < 1000	Ti < 700	Ti Alloy < 900
●	●					●	●	●						○
Ti Alloy < 1300	Ni < 500	Ni Alloy < 900	Ni Alloy < 1400	Cu < 350	Cu Alloy Short	Cu Alloy Long	Cu-Al-Fe < 1500	Al / Mg < 350	Al Wrought	Al Si<10%	Al Si>10%	Plastic Thermosoft	Plastic Thermoset	Plastic FRP
		○												

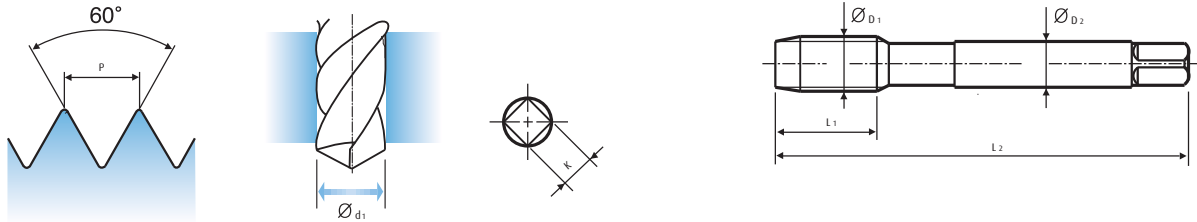
SPF54 Series
ISO metric fine threads DIN13



DIN 374



- With recessed threads for machine tapping of deep blind holes.
- Suitable for tapping blind holes due to special flute geometry and excellent chip evacuation.



Unit:mm

Size	Part No.	Thread Length L1	Overall Length L2	Shank Diameter ØD2	Square Size K	Tapping Drill Diameter Ød1
M4 X 0.5	SPF54256	5	63	2.8	2.1	3.5
M5 X 0.5	SPF54296	5	70	3.5	2.7	4.5
M6 X 0.75	SPF54326	8	80	4.5	3.4	5.2
M6 X 0.5	SPF54336	5	80	4.5	3.4	5.5
M7 X 0.75	SPF54356	10	80	5.5	4.3	6.2
M8 X 1	SPF54376	10	90	6	4.9	7
M8 X 0.75	SPF54386	8	80	6	4.9	7.2
M8 X 0.5	SPF54936	5	80	6	4.9	7.5
M10 X 1.25	SPF54436	16	100	7	5.5	8.8
M10 X 1	SPF54446	10	90	7	5.5	9
M10 X 0.75	SPF54456	10	90	7	5.5	9.2
M12 X 1.5	SPF54516	15	100	9	7	10.5
M12 X 1.25	SPF54526	15	100	9	7	10.8
M12 X 1	SPF54536	11	100	9	7	11
M14 X 1.5	SPF54556	15	100	11	9	12.5
M14 X 1.25	SPF54566	15	100	11	9	12.8
M14 X 1	SPF54576	11	100	11	9	13

Unit : N/mm²

● : Excellent
○ : Good

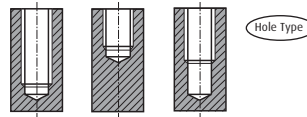
Steel < 400	Steel < 700	Steel < 850	Steel Alloy < 850	Steel Alloy < 1200	Steel Alloy > 1200	INOX Free < 850	INOX Aust. < 850	INOX < 1000	GG Cast < 500	GG Cast < 1000	GGG Cast < 700	GGG Cast < 1000	Ti < 700	Ti Alloy < 900
	●	●	●								●	●	○	
Ti Alloy < 1300	Ni < 500	Ni Alloy < 900	Ni Alloy < 1400	Cu < 350	Cu Alloy Short	Cu Alloy Long	Cu-Al-Fe < 1500	Al / Mg < 350	Al Wrought	Al Si<10%	Al Si>10%	Plastic Thermosoft	Plastic Thermoset	Plastic FRP
	○			○		●		○	○	○	●	○		



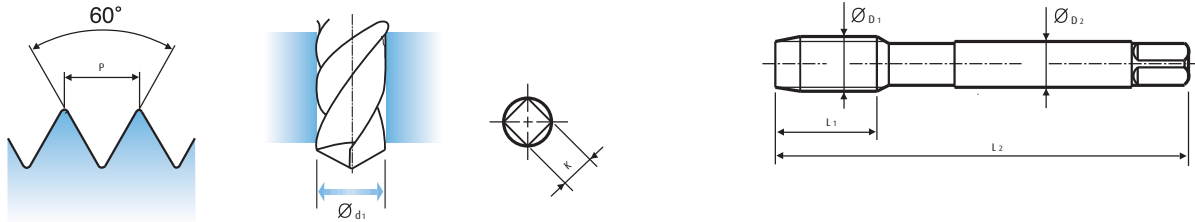
SPF54 Series
ISO metric fine threads DIN13



DIN 374



- Suitable for tapping blind holes due to special flute geometry and excellent chip evacuation.



Unit:mm

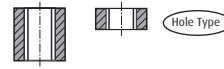
Size	Part No.	Thread Length L1	Overall Length L2	Shank Diameter ØD2	Square Size K	Tapping Drill Diameter Ød1
M16 X 1.5	SPF54616	15	100	12	9	14.5
M16 X 1	SPF54626	12	100	12	9	15
M18 X 1.5	SPF54676	17	110	14	11	16.5
M18 X 1	SPF54686	13	110	14	11	17
M20 X 1.5	SPF54726	17	125	16	12	18.5
M20 X 1	SPF54736	14	125	16	12	19
M22 X 1.5	SPF54766	17	125	18	14.5	20.5
M22 X 1	SPF54776	14	125	18	14.5	21
M24 X 2	SPF54796	20	140	18	14.5	22
M24 X 1.5	SPF54806	20	140	18	14.5	22.5
M26 X 1.5	SPF54856	20	140	18	14.5	24.5
M27 X 2	SPF54876	20	140	20	16	25
M27 X 1.5	SPF54886	20	140	20	16	25.5
M28 X 1.5	SPF54916	20	140	20	16	26.5
M30 X 2	SPF54966	22	150	22	18	28
M30 X 1.5	SPF54976	22	150	22	18	28.5

Unit : N/mm²

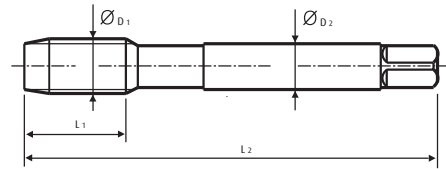
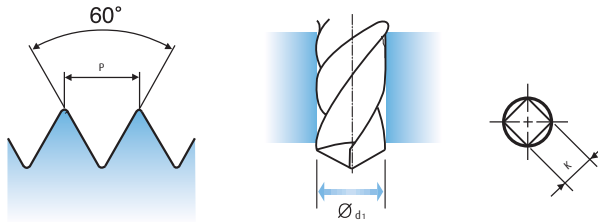
● : Excellent
○ : Good

Steel < 400	Steel < 700	Steel < 850	Steel Alloy < 850	Steel Alloy < 1200	Steel Alloy > 1200	INOX Free < 850	INOX Aust. < 850	INOX < 1000	GG Cast < 500	GG Cast < 1000	GGG Cast < 700	GGG Cast < 1000	Ti < 700	Ti Alloy < 900
	●	●	●								●	●	○	
Ti Alloy < 1300	Ni < 500	Ni Alloy < 900	Ni Alloy < 1400	Cu < 350	Cu Alloy Short	Cu Alloy Long	Cu-Al-Fe < 1500	Al / Mg < 350	Al Wrought	Al Si<10%	Al Si>10%	Plastic Thermosoft	Plastic Thermoset	Plastic FRP
	○			○		●		○	○	○	●	○		

SPP41 Series
ISO metric coarse threads DIN13



- Suitable for through hole in more cutting speed than other taps due to chick web.



Unit:mm

Size	Part No.	Thread Length L1	Overall Length L2	Shank Diameter ØD2	Square Size K	Tapping Drill Diameter Ød1
M3 X 0.5	SPP41206	11	56	2.2	1.8	2.5
M3.5 X 0.6	SPP41226	12	56	2.5	2.1	2.9
M4 X 0.7	SPP41246	13	63	2.8	2.1	3.3
M4.5 X 0.75	SPP41266	14	70	3.5	2.7	3.7
M5 X 0.8	SPP41286	15	70	3.5	2.7	4.2
M6 X 1	SPP41316	17	80	4.5	3.4	5
M7 X 1	SPP41346	17	80	5.5	4.3	6
M8 X 1.25	SPP41366	20	90	6	4.9	6.8
M9 X 1.25	SPP41396	20	90	7	5.5	7.8
M10 X 1.5	SPP41426	22	100	7	5.5	8.5
M11 X 1.5	SPP41466	22	100	8	6.2	9.5
M12 X 1.75	SPP41506	24	110	9	7	10.2
M14 X 2	SPP41546	26	110	11	9	12
M16 X 2	SPP41606	27	110	12	9	14
M18 X 2.5	SPP41656	30	125	14	11	15.5
M20 X 2.5	SPP41706	32	140	16	12	17.5
M22 X 2.5	SPP41746	32	140	18	14.5	19.5
M24 X 3	SPP41786	34	160	18	14.5	21
M27 X 3	SPP41866	36	160	20	16	24
M30 X 3.5	SPP41946	40	180	22	18	26.5

Unit : N/mm²

● : Excellent
○ : Good

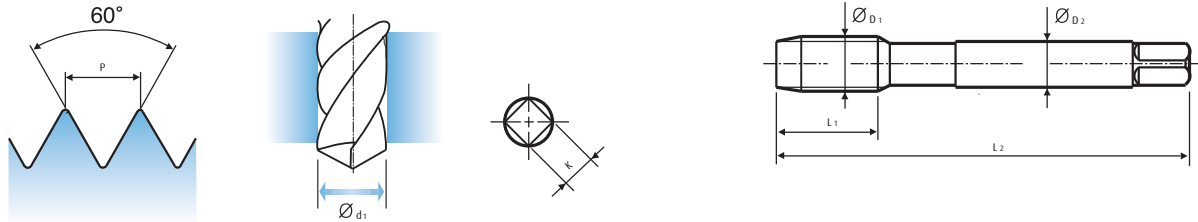
Steel < 400	Steel < 700	Steel < 850	Steel Alloy < 850	Steel Alloy < 1200	Steel Alloy > 1200	INOX Free < 850	INOX Aust. < 850	INOX < 1000	GG Cast < 500	GG Cast < 1000	GGG Cast < 700	GGG Cast < 1000	Ti < 700	Ti Alloy < 900
	●	●	●								●	●	○	
Ti Alloy < 1300	Ni < 500	Ni Alloy < 900	Ni Alloy < 1400	Cu < 350	Cu Alloy Short	Cu Alloy Long	Cu-Al-Fe < 1500	Al / Mg < 350	Al Wrought	Al Si<10%	Al Si>10%	Plastic Thermosoft	Plastic Thermoset	Plastic FRP
	○			○		●		○	○	○	●	○		



SPP42 Series
ISO metric coarse threads DIN13



- Suitable for through hole in more cutting speed than other taps due to chick web.



Unit:mm

Size	Part No.	Thread Length L1	Overall Length L2	Shank Diameter ØD2	Square Size K	Tapping Drill Diameter Ød1
M2 X 0.4	SPP42136	8	45	2.8	2.1	1.6
M2.2 X 0.45	SPP42156	8	45	2.8	2.1	1.75
M2.3 X 0.4	SPP42196	8	45	2.8	2.1	1.9
M2.5 X 0.45	SPP42176	9	50	2.8	2.1	2.05
M2.6 X 0.45	SPP42496	9	50	2.8	2.1	2.1
M3 X 0.5	SPP42206	11	56	3.5	2.7	2.5
M3.5 X 0.6	SPP42226	12	56	4	3	2.9
M4 X 0.7	SPP42246	13	63	4.5	3.4	3.3
M4.5 X 0.75	SPP42266	14	70	6	4.9	3.7
M5 X 0.8	SPP42286	15	70	6	4.9	4.2
M6 X 1	SPP42316	17	80	6	4.9	5
M7 X 1	SPP42346	17	80	7	5.5	6
M8 X 1.25	SPP42366	20	90	8	6.2	6.8
M9 X 1.25	SPP42396	20	90	9	7	7.8
M10 X 1.5	SPP42426	22	100	10	8	8.5
M11 X 1.5	SPP42466	22	100	8	6.2	9.5
M12 X 1.75	SPP42506	24	110	9	7	10.2
M14 X 2	SPP42546	26	110	11	9	12
M16 X 2	SPP42606	27	110	12	9	14
M18 X 2.5	SPP42656	30	125	14	11	15.5
M20 X 2.5	SPP42706	32	140	16	12	17.5
M22 X 2.5	SPP42746	32	140	18	14.5	19.5
M24 X 3	SPP42786	34	160	18	14.5	21
M27 X 3	SPP42866	36	160	20	16	24
M30 X 3.5	SPP42946	40	180	22	18	26.5

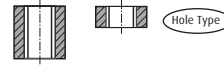
- DIN 371 (M2~M10) and DIN 376 (M11~M30)
- DIN profile not ISO

Unit : N/mm²

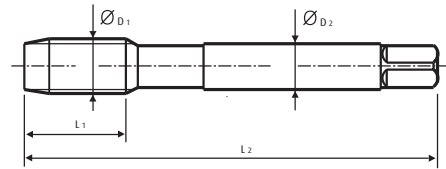
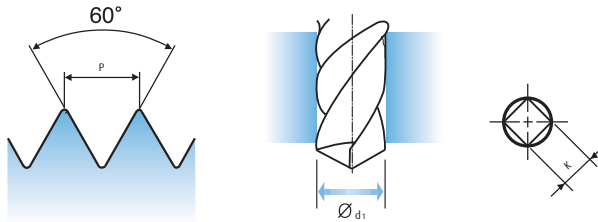
● : Excellent
○ : Good

Steel < 400	Steel < 700	Steel < 850	Steel Alloy < 850	Steel Alloy < 1200	Steel Alloy > 1200	INOX Free < 850	INOX Aust. < 850	INOX < 1000	GG Cast < 500	GG Cast < 1000	GGG Cast < 700	GGG Cast < 1000	Ti < 700	Ti Alloy < 900
			○	●				○						○
Ti Alloy < 1300	Ni < 500	Ni Alloy < 900	Ni Alloy < 1400	Cu < 350	Cu Alloy Short	Cu Alloy Long	Cu-Al-Fe < 1500	Al / Mg < 350	Al Wrought	Al Si<10%	Al Si>10%	Plastic Thermosoft	Plastic Thermoset	Plastic FRP
		○												

SPP43 Series
ISO metric fine threads DIN13



- Suitable for through hole in more cutting speed than other taps due to chick web.



Unit:mm

Size	Part No.	Thread Length L1	Overall Length L2	Shank Diameter ØD2	Square Size K	Tapping Drill Diameter Ød1
M4 X 0.5	SPP43256	10	63	2.8	2.1	3.5
M5 X 0.5	SPP43296	11	70	3.5	2.7	4.5
M6 X 0.75	SPP43326	13	80	4.5	3.4	5.2
M6 X 0.5	SPP43336	13	80	4.5	3.4	5.5
M7 X 0.75	SPP43356	14	80	5.5	4.3	6.2
M8 X 1	SPP43376	17	90	6	4.9	7
M8 X 0.75	SPP43386	14	80	6	4.9	7.2
M8 X 0.5	SPP43936	14	80	6	4.9	7.5
M10 X 1.25	SPP43436	22	100	7	5.5	8.8
M10 X 1	SPP43446	18	90	7	5.5	9
M10 X 0.75	SPP43456	18	90	7	5.5	9.2
M12 X 1.5	SPP43516	22	100	9	7	10.5
M12 X 1.25	SPP43526	22	100	9	7	10.8
M12 X 1	SPP43536	18	100	9	7	11
M14 X 1.5	SPP43556	22	100	11	9	12.5
M14 X 1.25	SPP43566	22	100	11	9	12.8
M14 X 1	SPP43576	18	100	11	9	13

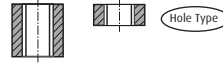
Unit : N/mm²

● : Excellent
○ : Good

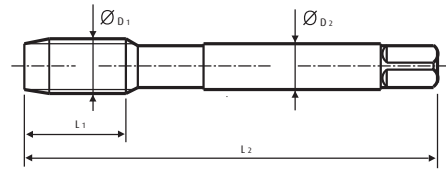
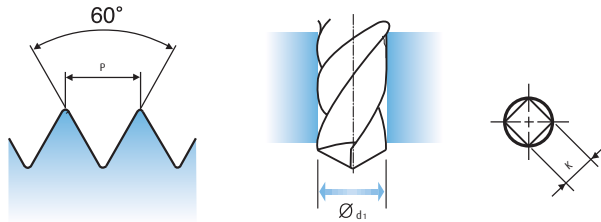
Steel < 400	Steel < 700	Steel < 850	Steel Alloy < 850	Steel Alloy < 1200	Steel Alloy > 1200	INOX Free < 850	INOX Aust. < 850	INOX < 1000	GG Cast < 500	GG Cast < 1000	GGG Cast < 700	GGG Cast < 1000	Ti < 700	Ti Alloy < 900
	●	●	●								●	●	○	
Ti Alloy < 1300	Ni < 500	Ni Alloy < 900	Ni Alloy < 1400	Cu < 350	Cu Alloy Short	Cu Alloy Long	Cu-Al-Fe < 1500	Al / Mg < 350	Al Wrought	Al Si<10%	Al Si>10%	Plastic Thermosoft	Plastic Thermoset	Plastic FRP
	○			○		●		○	○	○	●	○		



SPP43 Series
ISO metric fine threads DIN13



- Suitable for through hole in more cutting speed than other taps due to chick web.



Unit:mm

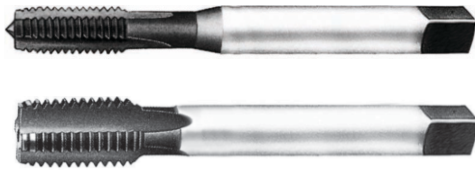
Size	Part No.	Thread Length L1	Overall Length L2	Shank Diameter \varnothing_{D2}	Square Size K	Tapping Drill Diameter \varnothing_{d1}
M16 X 1.5	SPP43616	22	100	12	9	14.5
M16 X 1	SPP43626	18	100	12	9	15
M18 X 1.5	SPP43676	25	110	14	11	16.5
M18 X 1	SPP43686	20	110	14	11	17
M20 X 1.5	SPP43726	25	125	16	12	18.5
M20 X 1	SPP43736	20	125	16	12	19
M22 X 1.5	SPP43766	25	125	18	14.5	20.5
M22 X 1	SPP43776	20	125	18	14.5	21
M24 X 2	SPP43796	27	140	18	14.5	22
M24 X 1.5	SPP43806	27	140	18	14.5	22.5
M26 X 1.5	SPP43856	28	140	18	14.5	24.5
M27 X 2	SPP43876	28	140	20	16	25
M27 X 1.5	SPP43886	28	140	20	16	25.5
M28 X 1.5	SPP43916	28	140	20	16	26.5
M30 X 2	SPP43966	30	150	22	18	28
M30 X 1.5	SPP43976	30	150	22	18	28.5

Unit : N/mm²

● : Excellent
○ : Good

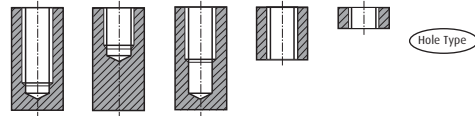
Steel < 400	Steel < 700	Steel < 850	Steel Alloy < 850	Steel Alloy < 1200	Steel Alloy > 1200	INOX Free < 850	INOX Aust. < 850	INOX < 1000	GG Cast < 500	GG Cast < 1000	GGG Cast < 700	GGG Cast < 1000	Ti < 700	Ti Alloy < 900
	●	●	●								●	●	○	
Ti Alloy < 1300	Ni < 500	Ni Alloy < 900	Ni Alloy < 1400	Cu < 350	Cu Alloy Short	Cu Alloy Long	Cu-Al-Fe < 1500	Al / Mg < 350	Al Wrought	Al Si<10%	Al Si>10%	Plastic Thermosoft	Plastic Thermoset	Plastic FRP
	○			○		●		○	○	○	●	○		

STF31 Series
ISO metric coarse threads DIN13

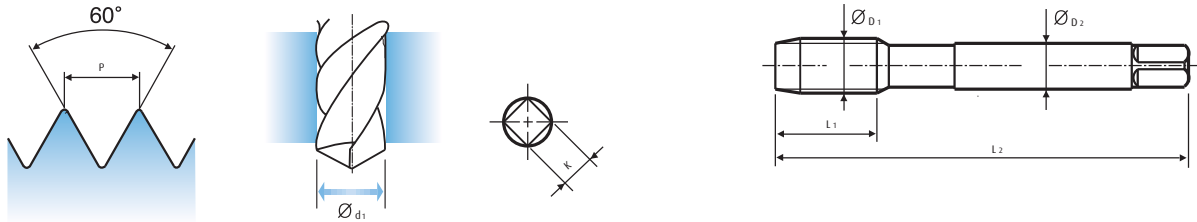


DIN 371

DIN 376



- Suitable for tapping cast iron or similar work materials.



Unit:mm

Size	Part No.	Thread Length L1	Overall Length L2	Shank Diameter ØD2	Square Size K	Tapping Drill Diameter Ød1
M2 X 0.4	STF31136	8	45	2.8	2.1	1.6
M2.2 X 0.45	STF31156	8	45	2.8	2.1	1.75
M2.3 X 0.4	STF31196	8	45	2.8	2.1	1.9
M2.5 X 0.45	STF31176	9	50	2.8	2.1	2.05
M2.6 X 0.45	STF31496	9	50	2.8	2.1	2.1
M3 X 0.5	STF31206	11	56	3.5	2.7	2.5
M3.5 X 0.6	STF31226	12	56	4	3	2.9
M4 X 0.7	STF31246	13	63	4.5	3.4	3.3
M4.5 X 0.75	STF31266	14	70	6	4.9	3.7
M5 X 0.8	STF31286	15	70	6	4.9	4.2
M6 X 1	STF31316	17	80	6	4.9	5
M7 X 1	STF31346	17	80	7	5.5	6
M8 X 1.25	STF31366	20	90	8	6.2	6.8
M9 X 1.25	STF31396	20	90	9	7	7.8
M10 X 1.5	STF31426	22	100	10	8	8.5
M11 X 1.5	STF31466	22	100	8	6.2	9.5
M12 X 1.75	STF31506	24	110	9	7	10.2
M14 X 2	STF31546	26	110	11	9	12
M16 X 2	STF31606	27	110	12	9	14
M18 X 2.5	STF31656	30	125	14	11	15.5
M20 X 2.5	STF31706	32	140	16	12	17.5
M22 X 2.5	STF31746	32	140	18	14.5	19.5
M24 X 3	STF31786	34	160	18	14.5	21
M27 X 3	STF31866	36	160	20	16	24
M30 X 3.5	STF31946	40	180	22	18	26.5

- DIN 371 (M2~M10) and DIN 376 (M11~M30)
- DIN profile not ISO

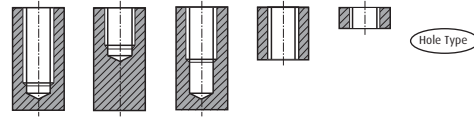
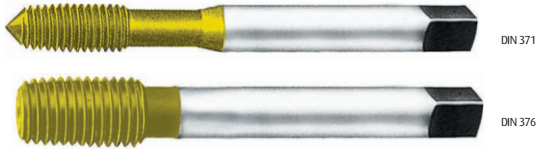
Unit : N/mm²

● : Excellent
○ : Good

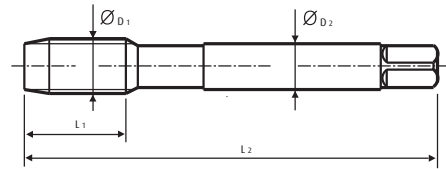
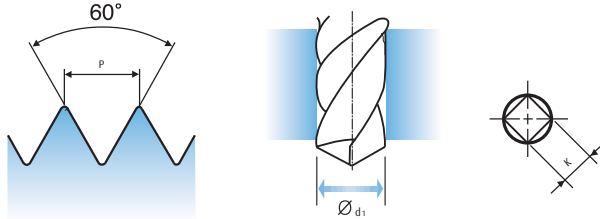
Steel < 400	Steel < 700	Steel < 850	Steel Alloy < 850	Steel Alloy < 1200	Steel Alloy > 1200	INOX Free < 850	INOX Aust. < 850	INOX < 1000	GG Cast < 500	GG Cast < 1000	GGG Cast < 700	GGG Cast < 1000	Ti < 700	Ti Alloy < 900
									●	●				
Ti Alloy < 1300	Ni < 500	Ni Alloy < 900	Ni Alloy < 1400	Cu < 350	Cu Alloy Short	Cu Alloy Long	Cu-Al-Fe < 1500	Al / Mg < 350	Al Wrought	Al Si<10%	Al Si>10%	Plastic Thermosoft	Plastic Thermoset	Plastic FRP
					○									●



CDF21 Series
ISO metric coarse threads DIN13



- Suitable for threading soft materials with at least 8-10% elongation.
- The pre-drilling holes are bigger than normal sized holes.



Unit:mm

Size	Part No.	Thread Length L1	Overall Length L2	Shank Diameter ØD2	Square Size K	Tapping Drill Diameter Ød1
M2 X 0.4	CDF21136	8	45	2.8	2.1	1.83
M2.2 X 0.45	CDF21156	8	45	2.8	2.1	2
M2.3 X 0.4	CDF21196	8	45	2.8	2.1	2.1
M2.5 X 0.45	CDF21176	9	50	2.8	2.1	2.3
M2.6 X 0.45	CDF21496	9	50	2.8	2.1	2.4
M3 X 0.5	CDF21206	11	56	3.5	2.7	2.8
M3.5 X 0.6	CDF21226	12	56	4	3	3.25
M4 X 0.7	CDF21246	13	63	4.5	3.4	3.7
M4.5 X 0.75	CDF21266	14	70	6	4.9	4.15
M5 X 0.8	CDF21286	15	70	6	4.9	4.65
M6 X 1	CDF21316	17	80	6	4.9	5.55
M7 X 1	CDF21346	17	80	7	5.5	6.55
M8 X 1.25	CDF21366	20	90	8	6.2	7.4
M9 X 1.25	CDF21396	20	90	9	7	8.4
M10 X 1.5	CDF21426	22	100	10	8	9.3
M11 X 1.5	CDF21466	22	100	8	6.2	10.3
M12 X 1.75	CDF21506	24	110	9	7	11.2
M14 X 2	CDF21546	26	110	11	9	13
M16 X 2	CDF21606	27	110	12	9	15
M18 X 2.5	CDF21656	30	125	14	11	16.8
M20 X 2.5	CDF21706	32	140	16	12	18.8

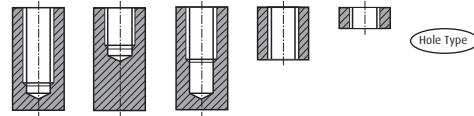
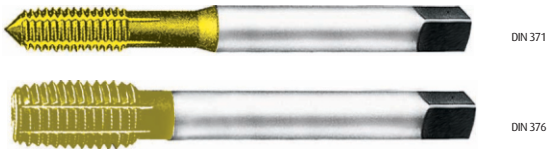
- DIN 371 (M2~M10) and DIN 376 (M11~M30)
- DIN profile not ISO

Unit : N/mm²

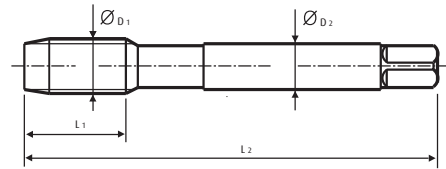
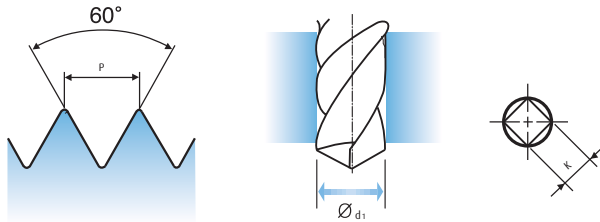
• : Excellent
○ : Good

Steel < 400	Steel < 700	Steel < 850	Steel Alloy < 850	Steel Alloy < 1200	Steel Alloy > 1200	INOX Free < 850	INOX Aust. < 850	INOX < 1000	GG Cast < 500	GG Cast < 1000	GGG Cast < 700	GGG Cast < 1000	Ti < 700	Ti Alloy < 900
●	●	●	●			○	○						●	
Ti Alloy < 1300	Ni < 500	Ni Alloy < 900	Ni Alloy < 1400	Cu < 350	Cu Alloy Short	Cu Alloy Long	Cu-Al-Fe < 1500	Al / Mg < 350	Al Wrought	Al Si<10%	Al Si>10%	Plastic Thermosoft	Plastic Thermoset	Plastic FRP
	●			●		○		●	●	○				

CDF22 Series
ISO metric coarse threads with Oil Grooves DIN13



- Suitable for threading soft materials with at least 8-10% elongation.
- The pre-drilling holes are bigger than normal sized holes.



Unit:mm

Size	Part No.	Thread Length L1	Overall Length L2	Shank Diameter ØD2	Square Size K	Tapping Drill Diameter Ød1
M2 X 0.4	CDF22136	8	45	2.8	2.1	1.83
M2.2 X 0.45	CDF22156	8	45	2.8	2.1	2
M2.3 X 0.4	CDF22196	8	45	2.8	2.1	2.1
M2.5 X 0.45	CDF22176	9	50	2.8	2.1	2.3
M2.6 X 0.45	CDF22496	9	50	2.8	2.1	2.4
M3 X 0.5	CDF22206	11	56	3.5	2.7	2.8
M3.5 X 0.6	CDF22226	12	56	4	3	3.25
M4 X 0.7	CDF22246	13	63	4.5	3.4	3.7
M4.5 X 0.75	CDF22266	14	70	6	4.9	4.15
M5 X 0.8	CDF22286	15	70	6	4.9	4.65
M6 X 1	CDF22316	17	80	6	4.9	5.55
M7 X 1	CDF22346	17	80	7	5.5	6.55
M8 X 1.25	CDF22366	20	90	8	6.2	7.4
M9 X 1.25	CDF22396	20	90	9	7	8.4
M10 X 1.5	CDF22426	22	100	10	8	9.3
M11 X 1.5	CDF22466	22	100	8	6.2	10.3
M12 X 1.75	CDF22506	24	110	9	7	11.2
M14 X 2	CDF22546	26	110	11	9	13
M16 X 2	CDF22606	27	110	12	9	15
M18 X 2.5	CDF22656	30	125	14	11	16.8
M20 X 2.5	CDF22706	32	140	16	12	18.8

- DIN 371 (M2~M10) and DIN 376 (M11~M30)
- DIN profile not ISO

Unit : N/mm²

● : Excellent
○ : Good

Steel < 400	Steel < 700	Steel < 850	Steel Alloy < 850	Steel Alloy < 1200	Steel Alloy > 1200	INOX Free < 850	INOX Aust. < 850	INOX < 1000	GG Cast < 500	GG Cast < 1000	GGG Cast < 700	GGG Cast < 1000	Ti < 700	Ti Alloy < 900
●	●	●	●			●	●						●	
Ti Alloy < 1300	Ni < 500	Ni Alloy < 900	Ni Alloy < 1400	Cu < 350	Cu Alloy Short	Cu Alloy Long	Cu-Al-Fe < 1500	Al / Mg < 350	Al Wrought	Al Si<10%	Al Si>10%	Plastic Thermosoft	Plastic Thermoset	Plastic FRP
	●			●		○		●		○				



Brisloy Tools India Private Limited
711, Tower - C, Business Zone
Nirvana Country, Sec - 50
Gurugram - 122018
INDIA
Phone +91 124 494 9505
tools@brisloy.com



<http://www.brisloy-tools.com>